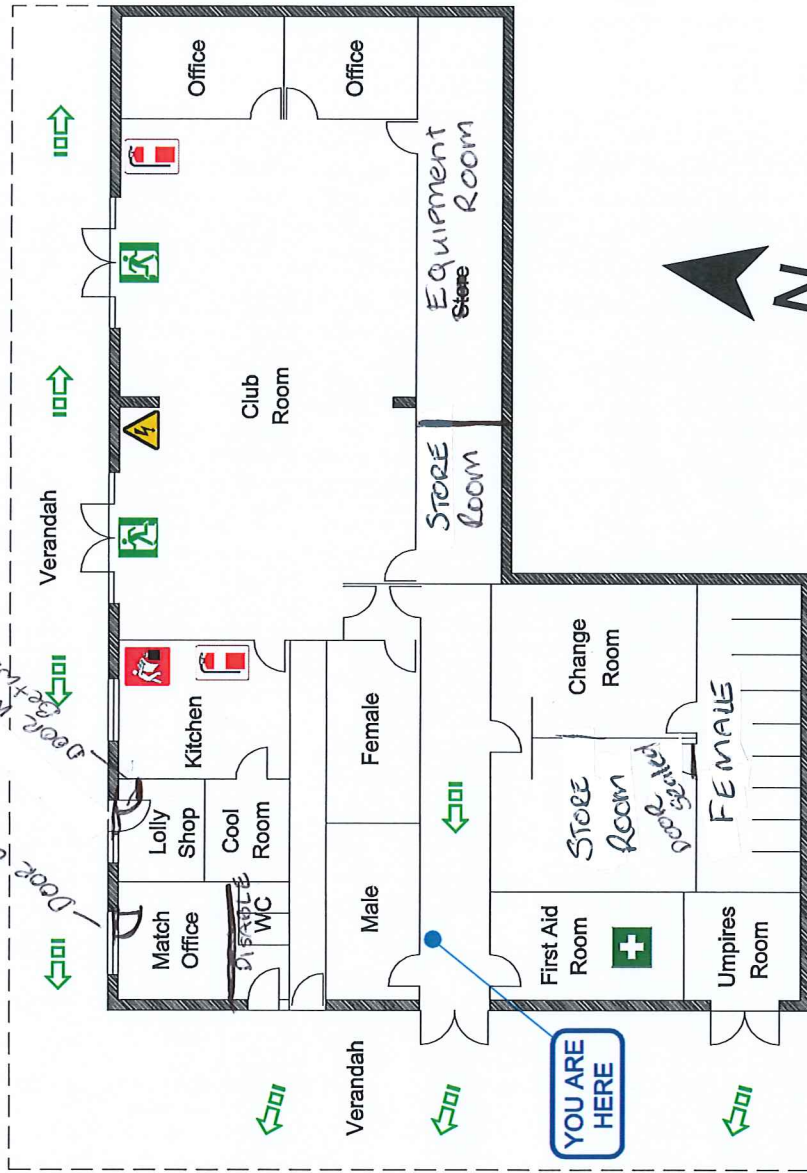


# EVACUATION DIAGRAM

Langford Sporting Complex  
81 Langford Avenue, Langford



### LEGEND

- Fire Exit
- Assembly Area
- Egress
- Dry Chemical Powder
- Fire Blanket
- Electrical Switch Board
- First Aid Kit

### In the event of Evacuation

- Follow your Wardens instructions as directed
- Leave the building via the closest designated exit
- Provide assistance to mobility impaired persons
- Proceed to your closest nominated Assembly Area
- Stay in the Assembly Area until the "All Clear" has been given by the Emergency Service Officer

### In the event of Fire

**R**EMOVE People from immediate danger

**A**LERT People in the nearby areas and raise the alarm

**C**ONTAIN The fire/ smoke if safe to do so

**E**XTINGUISH The fire only if trained and safe to do so

